

Helpman ZLE 616-10-VB-R-DOV-Z-G2

Specifications

Brand	Helpman
Type	ZLE 616-10-VB-R-DOV-Z-G2
kW	25,0
Refrigerant	NH 3 (ammonia)
Number of Fans	1
Fin Space in mm	10
Defrosting	None
m ³ /h	18.800
Sizes	2260x2550x1300 mm (LxWxH)
Volume	71,3 dm ³
Weight	621 kg
Stock	3

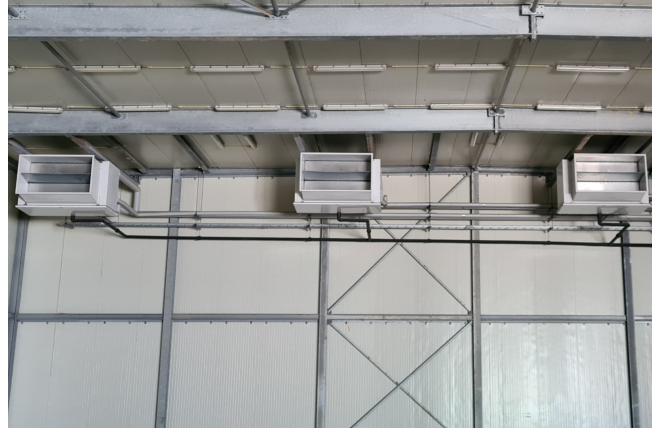


Description

Used Helpman ZLE 616-10-VB-R-DOV-Z-G2

Used Helpman ZLE 616-10-VB-R-DOV-Z-G2 NH3 evaporator with Hot gas defrost. Complete with 1 ABB fan - 50 Hz - 3,75 kW - 1410 RPM - Diameter 800 mm and a fan heating belt, this prevents ice build-up between the fan impeller and bellmouth during the defrost cycle. This evaporator also has a defrosting hood, while defrosting the heat stays inside the cooler and shortens the defrosting time.

*All components of this used evaporator will be tested on good working, leak free condition (electro engines), coils, bearings) Choosing HOSBV means buying with warranty. We perform a industrial cleaning and we are mote than happy to facillitate your shipment.





Apparatenfabriek Helpman BV
Peizerweg 97
NL - 9727 AJ Groningen

HELPMAN

Type	ZLE-616-10-VB-R-DOV-Z-G2	400V
Serial nr.	830477-002	
Medium	NH3	
Min/max workingtemperature	-40/55	°C
Design/testpressure	20/25	bar
Volume	73.8	dm ³
Weight (empty)	621	kg
		98



ABB Motors

Motor 3~ Cl.F IP55 IEC34 TP111
M2AA100LB No.2021072

V	Hz	min ⁻¹	kW	A	Cos φ
380-420 Y	50	1410	3.75	8.1	0.83

Cool.air

